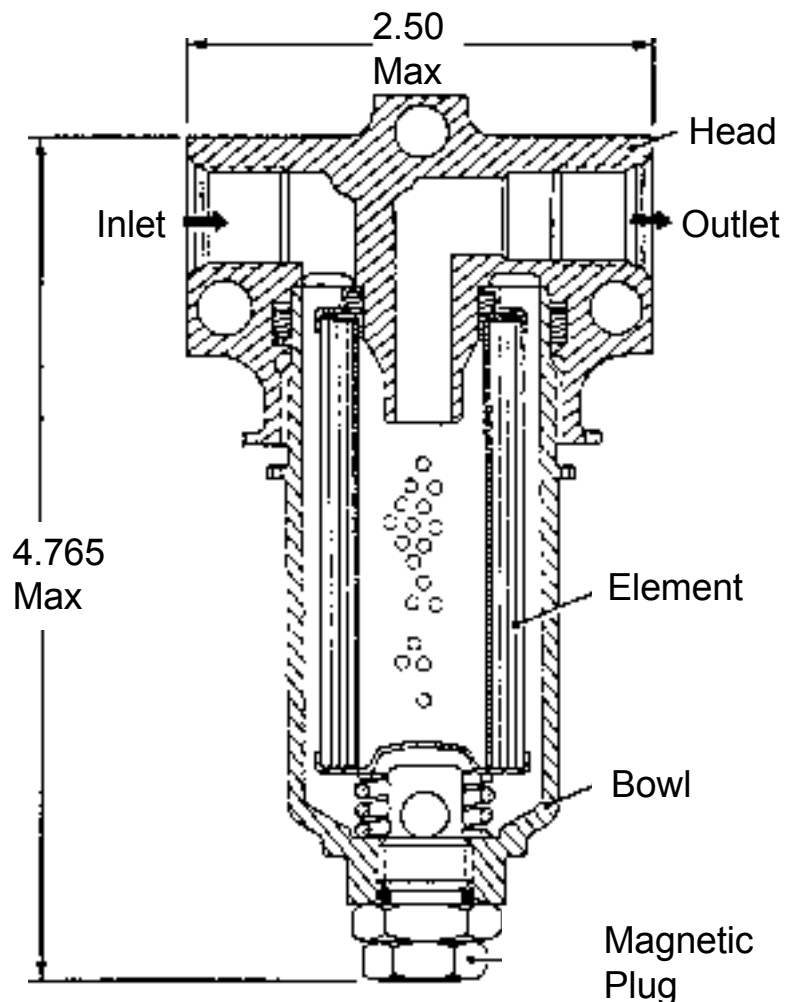


Filter Assembly

Description of Operation

This filter assembly consists of a housing and seals suitable for Skysrol 500 fluid, a 10-micron cellulose noncleanable filter element and a magnetic plug. Hydraulic fluid flows through the filter as shown by the arrows on the cut-away drawing. Foreign particles are removed by the filter element and are deposited on the outside of the element or in the filter bowl. The magnetic plug attracts magnetic particles and provides a visual means of inspection for metal chips which might indicate a failure of some components in the hydraulic system. The magnetic plug assembly includes an automatic shutoff valve to prevent drainage of fluid when the plug is removed.



Facet Part No: Filter Assembly 053034

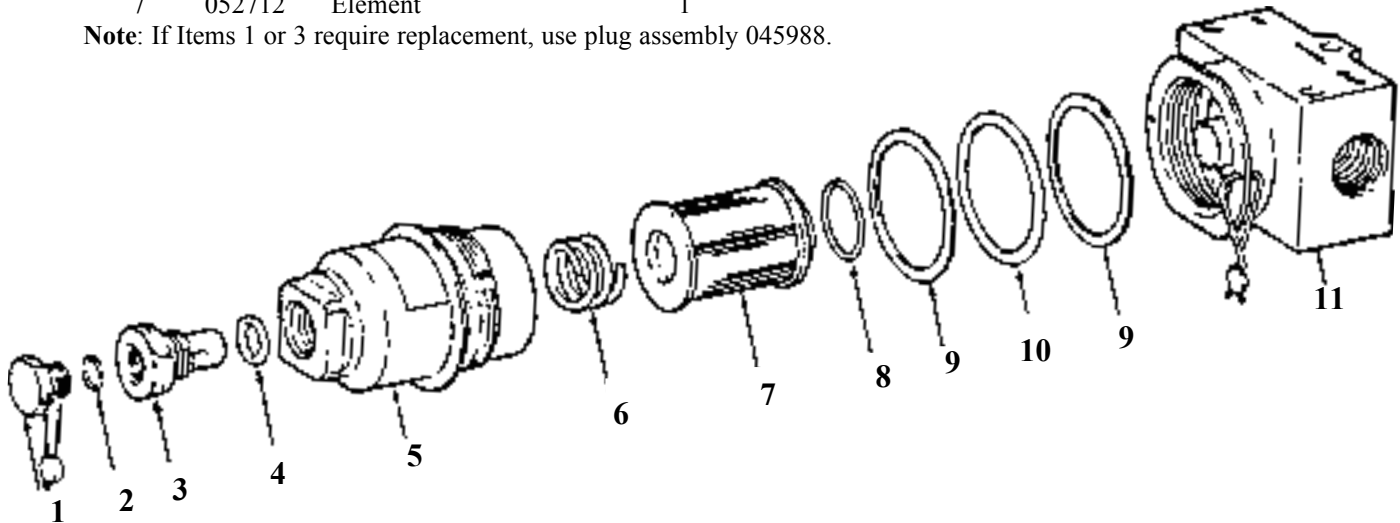
Boeing Part No: Assembly 10-60555-3

Filter Assembly

Parts List

Item No.	Part No.	Nomenclature	No. per Assembly	Item No.	Part No.	Nomenclature	No. per Assembly
1	See note	Magnetic Plug	1	8	049909	O-ring NAS 1611-114	1
2	049759	O-ring NAS 1612-2	1	9	910784	Backup Ring MS 28774-220	2
3	See note	Fitting	1	10	049411	O-ring NAS 1611-220	1
4	049948	O-ring NAS 1612-5	1	11	045994	Head	1
5	046069	Bowl	1		053711	Name Plate	1
6	045985	Spring	1		045988	Magnetic Plug Assembly	1
7	052712	Element	1				

Note: If Items 1 or 3 require replacement, use plug assembly 045988.



Maintenance and Overhaul Instructions

Disassembly: Disassembly of the filter follows the sequence of the assigned item numbers in exploded view.

Cleaning-External Aluminum Parts: Wash aluminum parts in a suitable solvent such as trichloroethylene, stoddard solvent, etc. Do not use strongly alkaline cleaners.

Inspection: Head, bowl and drain plug should be examined for distorted threads or scoring.

Replacement Items: Replace O-rings. Replace element. Replace defective head, bowl or drain plug.

Lubrication: Before reassembly, lubricate O-rings and threads with Skydrol 500.

Reassembly: Reassemble in the reverse order of disassembly. Tighten lubricated head and bowl threads to 75 in. lbs.

Test: Observe for external leakage under test pressure of 600 ±25 psi.